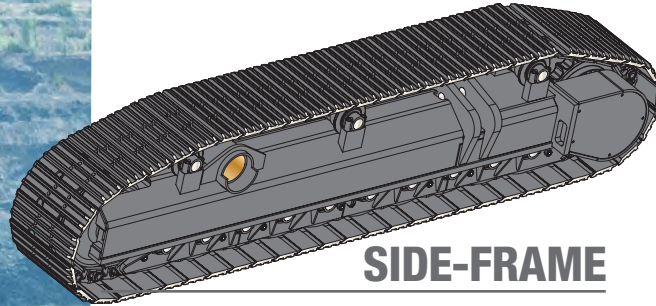
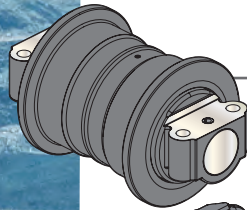




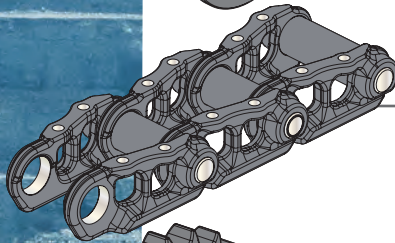
# **UNDERCARRIAGE COMPONENTS AND SYSTEMS FOR DRILLING MACHINES**



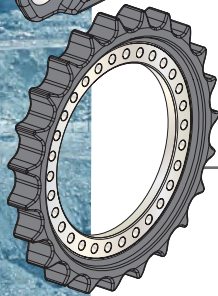
**SIDE-FRAME**



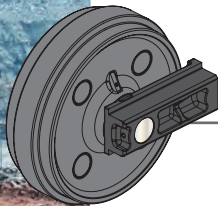
**TRACK ROLLER  
CARRIER ROLLER**



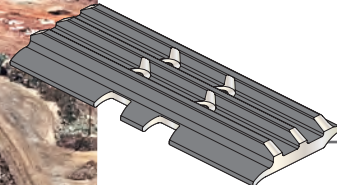
**TRACK GROUP  
TRACK CHAIN**



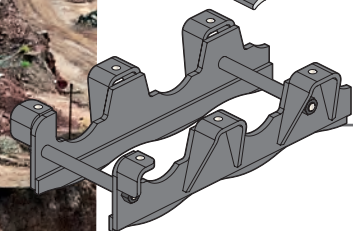
**SPROCKET**



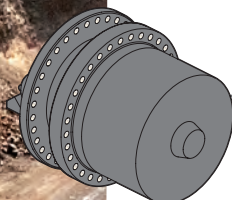
**IDLER**



**TRACK SHOE**



**CHAIN GUIDE**



**FINAL DRIVE**

ITM is a worldwide leader specialising in the design, development and manufacture of undercarriage components and systems for earthmoving, construction, mining, agricultural crawler machines as well as specialised non-standard applications.

In response to the increasing demand for machines that meet the specific requirements of the mining industry, ITM is proud to offer a wide range of components and system solutions for a variety of drilling machines.

For nearly 25 years ITM has been the supplier of choice to many Original Equipment Manufacturers in the field of drilling machines, such as Ingersoll Rand, Reedrill, Terex and Atlas Copco.

Design and engineering expertise, extensive research and development, combined with the usage of the most advanced technologies, allow ITM to develop innovative, reliable and competitive products, that meet the highest quality standards.

The Customer is ITM's focus: through a combination of localised manufacturing and a distribution network that covers most of the world, the ITM Group supports its customers through its proximity to them and its continuous monitoring of their needs.



Brand Description	Machine Model ITM P/N	Chain Pitch (mm)
<b>CATERPILLAR (TEREX - BUCYRUS)</b>	<b>MD5050 (SD-250) (R20 / R20C)</b>	<b>155.06</b>
Side-frame RH-LH	UQ903B00N00034/33	
Track Group	KY1022B0M42300	
Track Chain	EZ1026B0M00042	
Track Shoe	ZZ1022A0N0300V	
Track Roller	A72020B0M00	
Carrier Roller	A72020B0M00	
Sprocket	WW0089624 09	
Idler	PY4034C0Y00	
Final Drive	UQ900Y00N00118	
Hydraulic Motor	UQ900Y00N20084	
Chain Guide	WW0086735 09	
<b>CATERPILLAR (TEREX - BUCYRUS)</b>	<b>MD5075 (R30C)</b>	<b>171.05</b>
Side-frame RH-LH	UQ904B00N00048/47	
Track Group	K32063B1Y44380	
Track Chain	E32066A0Y00044	
Track Shoe	Z3209300N0380V	
Track Roller	A1404000M00	
Carrier Roller	C1404100Y00	
Sprocket	R35060D0Y01	
Idler	PU013400Y00	
Final Drive	UQ900Y00N10103	
Hydraulic Motor	UQ900Y00N20092	
Chain Guide	WW0086213 09	
<b>CATERPILLAR (TEREX - BUCYRUS)</b>	<b>MD5090 (SD-345) (345 / 345S)</b>	<b>171.05</b>
Side-frame RH-LH	UQ904B00N00044/43	
Track Group	K32063B1Y44380	
Track Chain	E32066A0Y00044	
Track Shoe	Z3209300N0380V	
Track Roller	A1404000M00	
Carrier Roller	C1404100Y00	
Sprocket	R14040B0Y01	
Idler	PU013400Y00	
Final Drive	UQ900Y00N00035	
Hydraulic Motor	UQ900Y00N20005	
Chain Guide	WW0086213 09	
<b>CATERPILLAR (TEREX - BUCYRUS)</b>	<b>MD5125 (SCH5000C) (SCH5000CL)</b>	<b>171.05</b>
Side-frame RH-LH	UQ904B00N00014/13	
Track Group	K32063B1Y44380	
Track Chain	E32066A0Y00044	
Track Shoe	Z3209300N0380V	
Track Roller	A1404000M00	
Carrier Roller	A1404000M00	
Sprocket	R3506000Y01	
Idler	PU013400Y00	
Final Drive	UQ900Y00N00044	
Hydraulic Motor	UQ900Y00N20040	
Chain Guide	WW0086213 09	

Brand Description	Machine Model ITM P/N	Chain Pitch (mm)
<b>CATERPILLAR (TEREX - BUCYRUS)</b>	<b>MD6240 (SKF-X) (SKF12 / SKF15)</b>	<b>202.08</b>
Side-frame RH-LH	UQ906B00N00012/11	
Track Group	L32203L0Y59750	
Track Chain	F32208A0Y00059	
Track Shoe	ZY4063F0N0750V	
Track Roller	A14060E0M00	
Carrier Roller	C14071C1Y00	
Sprocket	R14060L0Y01	
Idler	PV9544B0Y00	
Final Drive	UQ900Y00N00455	
Hydraulic Motor	UQ900Y00N20014	
Chain Guide	UQ906B00N50015	
<b>CATERPILLAR (TEREX - BUCYRUS)</b>	<b>MD6290 (SKF / SKF11)</b>	<b>202.08</b>
Side-frame RH-LH	UQ906B00N00008/7	
Track Group	L32203L0Y53750	
Track Chain	F32208A0Y00053	
Track Shoe	ZY4063F0N0750V	
Track Roller	A14060E0M00	
Carrier Roller	C14071C1Y00	
Sprocket	R14060S0Y01	
Idler	PV9544B0Y00	
Final Drive	UQ900Y00N00096	
Hydraulic Motor	UQ900Y00N20033	
Chain Guide	UQ906B00N50010	
<b>CATERPILLAR (TEREX - BUCYRUS)</b>	<b>MD6420 (SKS / SKSS)-B8 Size</b>	<b>228.06</b>
Side-frame RH-LH	UQ908B00N00006/5	
Track Group	L32203L0Y59750	
Track Chain	FY4088A0Y00055	
Track Shoe	ZY4083C0N0750V	
Track Roller	A14080CAY00	
Carrier Roller	A14080CAY00	
Sprocket	ROA52000Y01	
Idler	PV974400Y00	
Final Drive	UQ900Y00N00012	
Hydraulic Motor	UQ900Y00N20028	
Chain Guide (FRT/REAR)	UQ908B00N50001	
Chain Guide (MIDDLE)	UQ908B00N50002	
<b>CATERPILLAR (TEREX - BUCYRUS)</b>	<b>MD6540 (SKL)</b>	<b>228.06</b>
Side-frame RH-LH	UQ908B00N00020/19	
Track Group	LY4083B0Y61900	
Track Chain	FY4088A0Y00061	
Track Shoe	ZY4083C0N0900V	
Track Roller	A14080CAY00	
Carrier Roller	A14080CAY00	
Sprocket	R14080A0Y01	
Idler	PV974400Y00	
Final Drive	UQ900Y00N00254	
Hydraulic Motor	UQ900Y00N20017	
Chain Guide (FRT/REAR)	UQ908B00N50003	
Chain Guide (MIDDLE)	UQ908B00N50004	

Brand Description	Machine Model ITM P/N	Chain Pitch (mm)
<b>ATLAS COPCO</b>	<b>590</b>	<b>149.17</b>
Side-frame RH-LH	UV401B00N00002/1	
Track Chain	K4445700M44305	
Track Shoe	Z5535100N0305V	
Track Shoe	Z17353A0N0305V	
Track Roller	A4445000N00	
Carrier Roller	C17351A1N00	
Sprocket	R4445000M01	
Idler	P68044D0M00	
Final Drive	UQ900Y00N00217	
Chain Guide (LH)	UV401B00N50001	
Chain Guide (RH)	UV401B00N50002	
<b>ATLAS COPCO</b>	<b>780</b>	<b>171.05</b>
Side-frame RH-LH	UV404B00N00006/5	
Track Group	K14043M1M42350	
Track Chain	E14046B3M00042	
Track Shoe	Z3209300N0350V	
Track Roller	A1404000M00	
Carrier Roller	C0104100M00	
Sprocket	R4404000M01	
Idler	P2519300M00	
Final Drive	UQ900Y00N00131	
Chain Guide (LH)	UV404B00N50001	
Chain Guide (RH)	UV404B00N50002	
<b>ATLAS COPCO</b>	<b>DM25 - DM30</b>	<b>190</b>
Side-frame RH-LH	UV460B00N00002/1	
Track Group	K1622302M49500	
Track Chain	E1622601M00049	
Track Shoe	Z16223A1N0500V	
Track Roller	A78200B0M00	
Carrier Roller	C78201B0M00	
Sprocket	R14190A0M01	
Idler	P7820400N00	
Final Drive	UQ900Y00N00113	
Hydraulic Motor	UQ900Y00N20005	
Chain Guide (FRT/REAR)	UV460B00N50002	
Chain Guide (MIDDLE)	UV460B00N50003	
<b>ATLAS COPCO</b>	<b>DM45</b>	<b>202.8</b>
Side-frame RH-LH	UV406B00N00004/3	
Track Group	KY6273H0M48600	
Track Chain	EY627600M00048	
Track Shoe	ZY6273B0N0600V	
Track Roller	A01250C0M00	
Carrier Roller	C0125100M00	
Sprocket	R4406000M01	
Idler	P01254B0N00	
Final Drive	UQ900Y00N00108	
Hydraulic Motor	UQ900Y00N20011	
Chain Guide (FRT/REAR)	UV406B00N50003	
Chain Guide (MIDDLE)	UV406B00N50004	

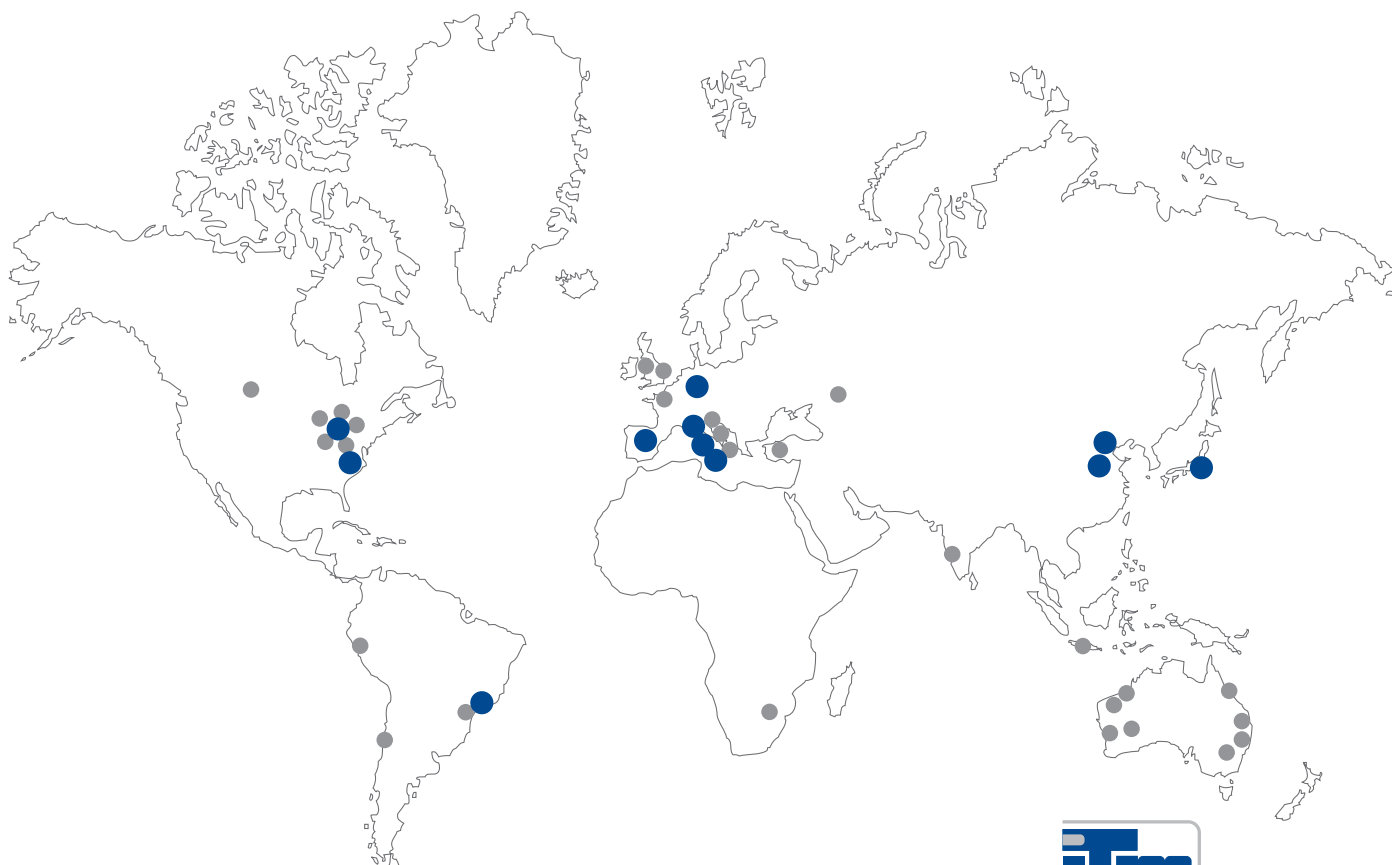
Brand Description	Machine Model ITM P/N	Chain Pitch (mm)
<b>ATLAS COPCO</b>	<b>DML</b>	<b>215.9</b>
Side-frame RH-LH	UV407B00N00004/3	
Track Group	K16303B1M45850	
Track Chain	E16306A1M00045	
Track Shoe	Z1630300N0850V	
Track Roller	A0130000M00	
Carrier Roller	C0125100M00	
Sprocket	R44300B0M01	
Idler	P0130400Y00	
Final Drive	UQ900Y00N00063	
Hydraulic Motor	UQ900Y00N20028	
Chain Guide (FRT/REAR)	UV407B00N50006	
Chain Guide (MIDDLE)	UV407B00N50007	
<b>ATLAS COPCO</b>	<b>DML-SP</b>	<b>215.9</b>
Side-frame RH-LH	UV407B00N000010/9	
Track Group	K16303B0M52850	
Track Chain	E16306A1M00052	
Track Shoe	Z16303A0N0850V	
Track Roller	A0130000M00	
Carrier Roller	C0125100M00	
Sprocket	R44300B0M01	
Idler	P0130400Y00	
Final Drive	UQ900Y00N00063	
Hydraulic Motor	UQ900Y00N20028	
Chain Guide (FRT/REAR)	UV407B00N50008	
Chain Guide (MIDDLE)	UV407B00N50009	
<b>ATLAS COPCO</b>	<b>DMM2</b>	<b>215.9</b>
Side-frame RH-LH	UV407B00N00006/5	
Track Group	K16303B1M52850	
Track Chain	E16306A1M00052	
Track Shoe	Z1630300N0850V	
Track Roller	A0130000M00	
Carrier Roller	C0125100M00	
Sprocket	R44300B0M01	
Idler	P0130400Y00	
Final Drive	UQ900Y00N00063	
Hydraulic Motor	UQ900Y00N20028	
Chain Guide (FRT/REAR)	UV407B00N50010	
Chain Guide (MIDDLE)	UV407B00N50011	
<b>ATLAS COPCO</b>	<b>DMM3</b>	<b>228.6</b>
Side-frame RH-LH	UQ908A00N00006/5	
Track Group	LY4083R0Y62A50	
Track Chain	FY4088E0Y00062	
Track Shoe	ZY4083D0N1050V	
Track Roller	A14080CAY00	
Carrier Roller	C0108100Y00	
Sprocket	R14080A0Y01	
Idler	PY4083A0Y00	
Final Drive	UQ900Y00N00011	
Hydraulic Motor	UQ900Y00N20017	

# ATLAS COPCO

Brand Description	Machine Model ITM P/N	Chain Pitch (mm)
<b>ATLAS COPCO</b>	<b>DMH</b>	<b>228.6</b>
Side-frame RH-LH	UQ908B00N00010/9	
Track Group	LY4083N0Y65800	
Track Chain	FY4088M0Y00065	
Track Shoe	ZY408300N0800V	
Track Roller	A14080B1Y00	
Carrier Roller	C0108100Y00	
Sprocket	R14080A0Y01	
Idler	PY4083A0Y00	
Final Drive	UQ900Y00N00011	
Hydraulic Motor	UQ900Y00N20017	
Chain Guide	UV408Z00N50011	
<b>ATLAS COPCO</b>	<b>PV271</b>	<b>215.9</b>
Side-frame RH-LH	UV407B00N00008/7	
Track Group	K16303B1M63900	
Track Chain	E16306A1M00063	
Track Shoe	Z1630300N0900V	
Track Roller	A140700AM00	
Carrier Roller	A0130000M00	
Sprocket	R44300C0M01	
Idler	P0130400Y00	
Final Drive	UQ900Y00N00233	
Hydraulic Motor	UQ900Y00N20049	
Chain Guide (FRT/REAR)	UV407B00N50012	
Chain Guide (MIDDLE)	UV407B00N50013	
<b>ATLAS COPCO</b>	<b>PV275</b>	<b>215.9</b>
Side-frame RH-LH	UV407B00N00012/11	
Track Group	K16303B1M58900	
Track Chain	E16306A1M00058	
Track Shoe	Z1630300N0900V	
Track Roller	A140700AM00	
Carrier Roller	C0125100M00	
Sprocket	R44300C0M01	
Idler	P0130400Y00	
Final Drive	UQ900Y00N00233	
Hydraulic Motor	UQ900Y00N20049	
Chain Guide	UV407B00N50005	

Brand Description	Machine Model ITM P/N	Chain Pitch (mm)
<b>ATLAS COPCO</b>	<b>PV351</b>	<b>260.35</b>
Side-frame RH-LH	UV409B00N00002/1	
Track Group	L14092D0Y65750	
Track Chain	FY4098E0Y00065	
Track Shoe	ZY4092C0N0750V	
Track Roller	A7665000H00	
Carrier Roller	C01091E0M00	
Sprocket	R14090G0Y01	
Idler	PS4113A0Y00	
Final Drive	UQ900Y00N00171	
Chain Guide (FRT/REAR)	UQ909Z00N50007	
Chain Guide (MIDDLE)	UQ909Z00N50008	
<b>ATLAS COPCO</b>	<b>DMH2</b>	<b>228.6</b>
Side-frame RH-LH	UV408B00N00001/2	
Track Group	LY4083F0M65800	
Track Chain	FY4088A0M00065	
Track Shoe	ZY4083A0N0800V	
Track Roller	A14080CAY00	
Carrier Roller	C01081A0Y00	
Sprocket	R14080A0Y01	
Idler	PY4083A0Y00	
Final Drive	UQ900Y00N00011	
Hydraulic Motor	UQ900Y00N20017	
Chain Guide (LH)	UV408B00N50001	
Chain Guide (RH)	UV408B00N50002	

For additional non-listed components, please contact ITM or the ITM Dealer nearest to you.



**Titan International**  
Des Moines, Iowa, USA  
Freeport, Illinois, USA  
Bryan, Ohio, USA  
Quincy, Illinois, USA  
Saltville, Virginia, USA  
São Paulo, Brazil

**Voltyre-Prom**  
Volgograd, Russia  
(Majority Share)

**Titan Mining Services (TMS) SWT**  
Alberta, Canada

**Titan Mining Services (TMS) Titan Australia Pty Ltd**  
Emerald, QLD, Australia  
Kalgoorlie, WA, Australia  
Karratha, WA, Australia  
Muswellbrook, NSW, Australia

Perth, WA, Australia  
Port Hedland, WA, Australia  
Sydney, NSW, Australia  
Yatala, QLD, Australia

**Titan Mining Services (TMS) PT Titan Wheels Indonesia**  
Jakarta, Indonesia

**Titan Mining Services (TMS) Titan Wheels South Africa (Pty) Ltd**  
Nuffield, Springs, SA

**Titan Mining Services (TMS) Aros del Pacifico S.A.C.**  
Lima, Peru

**Titan Mining Services (TMS) Aros del Pacifico S.A.**  
Santiago, Chile

**Titan Steel Wheels Ltd**  
Kidderminster, UK

**Titan Distribution (UK) Ltd**  
St. Helens, UK

**Titan Italia SpA**  
Crespellano (BO), Italy  
Finale Emilia (MO), Italy  
Jesi (AN), Italy

**Titan France SAS**  
Flers, France

**Titan Asia A.S.**  
Aydin, Turkey

**Wheels India Ltd**  
Tamilnadu, India  
(Minority Share)

**Italtractor ITM SpA**  
Fanano (MO), Italy  
Ceprano (FR), Italy  
Potenza, Italy

**Titan Intertractor GmbH**  
Gevelsberg, Germany

**Pyrsa Piezas y Rodajes S.A.**  
Monreal del Campo  
(Teruel), Spain

**Intertractor America Corp.**  
Elkhorn, WI, USA  
Winston-Salem, NC, USA

**ITM Latin America Ltda**  
Atibaia, São Paulo, Brazil

**ITM Track (Tianjin) Ltd**  
Tianjin, P.R. of China

**Titan ITM (Tianjin) Co. Ltd**  
WDA Tianjin, P.R. of China

**Titan ITM Japan Ltd**  
Yokohama, Japan